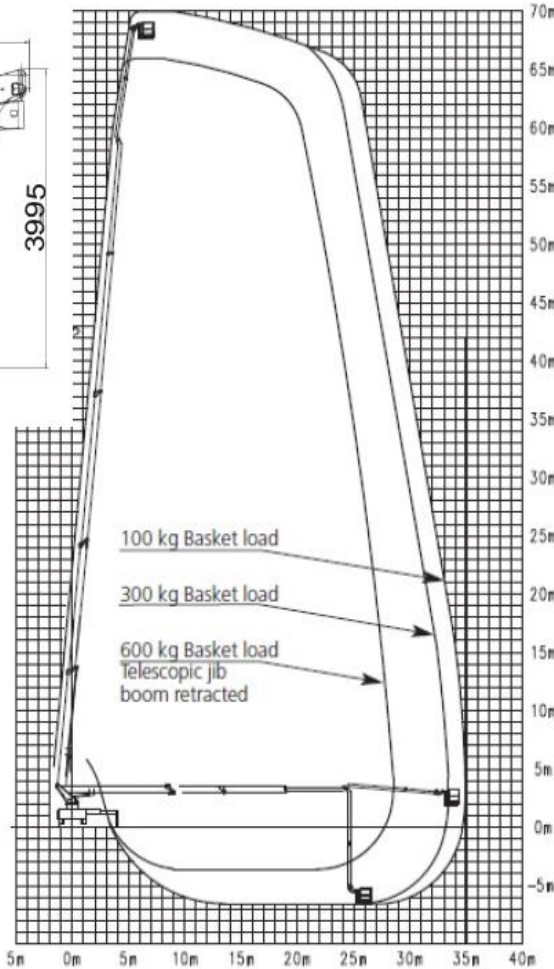
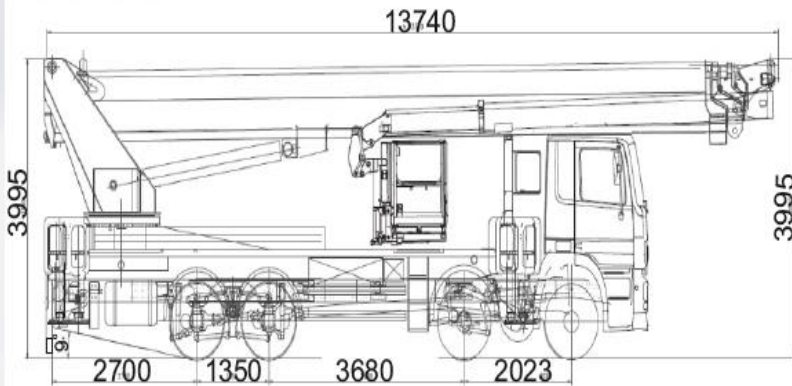




WT-70 TECHNICAL SPECIFICATIONS

Technical Data WT 700



Working height:	70 m
Lifting height:	68 m
Lateral outreach:	35 m
Up-and-over:	9.65 m
Carrying capacity:	600 kg
Range of rotation:	540°
Size of working cage:	1,05 x 3,88 m
Rotating angle of working cage:	±80°
Variable jacking width:	max. 8,27 m
Truck Weight	36,000 kg

