

# nifty

## HR28 HYBRID 4x4

### SELF PROPELLED ACCESS PLATFORM



**28.0m (92ft)**  
Working height

**19.0m (62ft)**  
Unrestricted working  
outreach at 280kg

**360° Continuous Slew**  
Better access to applications

**GVW Only 14,650kg\***  
Low cost transportation

**40% Gradeability**  
4WD for rough terrain

**SiOPS® as Standard**  
Multi award winning  
operator protection

**180° Rotating Cage  
with 150° Fly-Boom**  
More space to work and  
precise positioning

**Hybrid Power**  
Versatile, fuel efficient &  
environmentally conscious



**niftylift.com**



# nifty HR28 HYBRID 4x4

The **Height Rider 28 (HR28) Hybrid Four-Wheel-Drive (4x4)** is one of a new generation of environmentally conscious work platforms from Niftylift. Combining advanced power-source technology with efficient 4x4, it delivers outstanding performance from a compact and low-weight design.

On Diesel, the **HR28's** revolutionary **Hybrid** system can automatically utilise its electric motor to boost power whenever needed. This allows the **HR28 Hybrid 4x4** to operate with a smaller engine, reducing fuel consumption and its exhaust purification system then further reduces CO/NOx, particulates, and noise emissions.

The **HR28 Hybrid 4x4** can also operate on battery alone, making it ideal for indoor, quiet or clean applications. **Diesel Re-Gen** recharges the batteries without a mains power source and a fast charge is achieved whenever the machine is idle and the engine is left running.

## SAFETY FEATURES

- SiOPS®
- Tilt Alarm
- Foam Filled Tyres
- Harness Points
- CE Mark
- Lock Valves on all Hydraulic Cylinders
- Automatic Fail-Safe Brakes
- Powered Auxiliary Descent
- Dual Controls (Platform & Base)



The **HR28 Hybrid 4x4** also incorporates Niftylift's multi award winning SiOPS® safety system. **SiOPS®** eliminates sustained involuntary operation by instantly stopping machine movement if the operator is pushed onto the control console, allowing them to safely recover their situation.

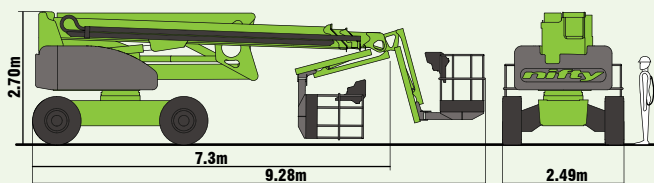
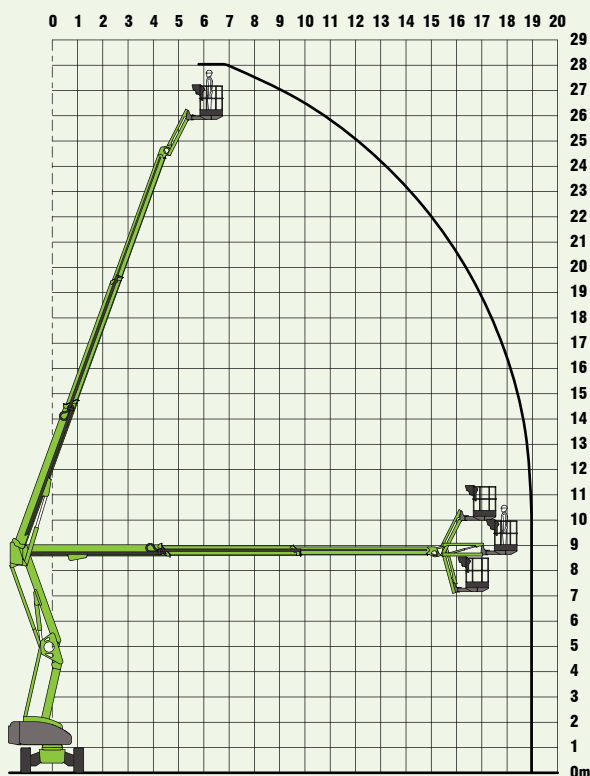


## SPECIFICATIONS

<b>Working Height</b>	28m	92ft
<b>Platform Height</b>	26m	85ft 6in
<b>Working Outreach</b>	19m	62ft
<b>Slew</b>	360° Continuous	
<b>Fly-Boom Arc</b>	150°	
<b>Width</b>	2.49m	8ft 2in
<b>Height</b>	2.7m	8ft 10in
<b>Length - Stowed</b>	7.3m	23ft 11in
<b>- Overall</b>	9.28m	30ft 5in
<b>Minimum Weight</b>	14,650kg*	32,300lbs*
<b>Turning Radius - Outside</b>	5.9m	19ft 4in
<b>Platform Rotation</b>	180°	
<b>Platform Capacity</b>	280kg	620lbs
<b>Platform Size</b>	2.4m x 0.9m	7ft 10in x 2ft 11in
<b>Drive Speed - 4x4</b>	4.7km/h	3mph
<b>Gradeability</b>	40% (22°)	
<b>Power System - Hybrid</b>	35kW Hybrid Power	

\* Weights may vary according to specification, please confirm before ordering.

Due to a policy of continuing development and improvement, Niftylift reserves the right to change any specification without notice. Please confirm exact specification before ordering.



Supplied by:



**mainline**  
PLANT • ACCESS • TRAINING • POWER

IS-08

**Manufacturers of trailer mounted, self propelled and vehicle mounted platforms.**



**NIFTYLIFT LTD**  
Fingle Drive  
Stonebridge  
Milton Keynes  
MK13 0ER  
England

[www.niftylift.com](http://www.niftylift.com)

e.mail: [info@niftylift.com](mailto:info@niftylift.com)

Tel.: +44 (0)1908 223456

Fax.: +44 (0)1908 312733