

Model

# 600 Series

ARTICULATING  
BOOM LIFTS



**mainline**

PLANT • ACCESS • TRAINING • POWER

**JLG**

## Features

6 ft (1.83 m) Articulating Jib (600AJ only)  
Platform:  
36 x 96 in. (0.91 x 2.44 m) side entry  
Inward Self-Closing Swing Gate  
Oscillating Axle  
180 Degree Hydraulic Platform Rotator  
110V-AC Receptacle in the Platform  
5 Degree Tilt Alarm/Indicator Light  
Swing-Out Engine Tray  
12V-DC Auxiliary Power  
Hourmeter  
Horn  
Control ADE® System  
Proportional Controls  
Gull-Wing Engine Hood  
Operator Tool Tray  
Platform Console Machine  
Status Light Panel\*  
Lifting/Tie Down Lugs  
14 x 17.5 Rim Protector Lug Tread Tires  
All Motion Alarm  
Glow Plugs (Diesel Engines)

\* Provides indicator lights at platform control console for system distress, 5 degree tilt light, and foot switch status.

## Accessories & Options

Platform: 36 x 72 in. (0.91 x 1.83 m)  
Fall Arrest Platform, Rear Entry<sup>1</sup>:  
36 x 96 in. (0.91 x 2.44 m)  
Mesh to Top Rail— Bolt-on Aluminum  
Soft Touch System  
Foam-Filled Tires  
43.5 lb (19.7 kg) Propane Tank  
Exhaust Purifier Muffler (Diesel)  
Cold Weather Start Kit<sup>2</sup>  
Hostile Environment Kit<sup>3</sup>  
Light Package<sup>4</sup>  
Platform Worklights  
Flashing Amber Beacon  
Arctic Package<sup>5</sup>

### Accessory Packages:

SkyPower®  
SkyWelder®  
SkyGlazier®  
SkyCutter®  
Pipe Rack

1. Foam-filled tires required.

2. Includes engine block heater (CAT) or glow plugs (Diesel), battery heater, oil tank heater.

3. Includes console cover, boom wipers and cylinder bellows.

4. Includes head and tail lights, and platform worklights.

5. Includes arctic hydraulic hoses (drive and steer only) and main boom cable, arctic hydraulic oil, extreme cold engine oil, anti-freeze (CAT only), fuel conditioner, engine block heater, battery blanket, glow plugs, hydraulic tank heater, and oversized footswitch.



### Extra Reach and High Capacity

- The industry's best reach envelope— 26 ft 7 in. (8.1 m) up and over height and up to 39 ft 9 in. (12.12 m) horizontal outreach
- Up to 1,000 lb (454 kg) platform capacity

### More Versatility

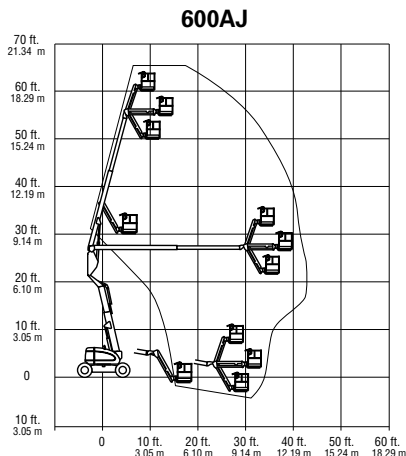
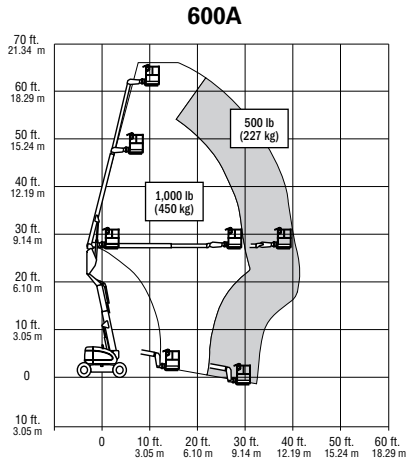
- 7 ft (2.13 m) wide narrow chassis models go where wider competitive machines can't
- Articulating jib models to access hard to reach areas
- Standard oscillating axle and optional 4-wheel drive deliver outstanding drive performance
- Optional 4-wheel steer provides unmatched maneuverability in confined areas
- Exclusive Workstation in the Sky® options and accessories

### Easier Maintenance, Reduced Costs

- Swing-out engine tray allows for faster and easier access for routine maintenance
- Exclusive Advanced Design Electronics (Control ADE®) System provides smoother machine functions, increased fuel efficiency and reduced emissions



**Specifications**



**Reach**

Platform Height	
600A	60 ft 5 in. (18.42 m)
600AJ	60 ft 7 in. (18.47 m)
Horizontal Outreach	
600A	39 ft 7 in. (12.07 m)
600AJ	39 ft 9 in. (12.10 m)
Up and Over Clearance	26 ft 7 in. (8.1 m)
Swing	360 Degrees Continuous
Platform Capacity—Restricted	
600A	1,000 lb (450 kg)
600AJ	500 lb (227 kg)
Platform Capacity—Unrestricted	
600A	500 lb (227 kg)
Platform Rotator	180 Degrees Hydraulic
Jib (Range of Articulation)	
600AJ	130 Degrees (+70, -60)

**Dimensions**

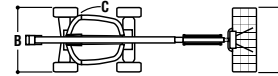
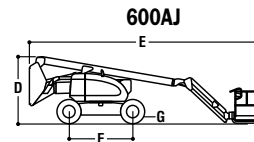
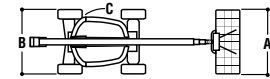
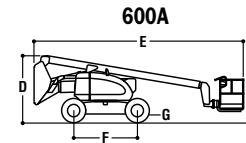
A. Platform Size	36 x 96 in. (0.91 x 2.44 m)
B. Overall Width	8 ft. (2.44 m)
Narrow Models	7 ft (2.13 m)
C. Tailswing (working condition)	Zero
Narrow Models	5 in. (13 cm)
D. Stowed Height	8 ft 4 in. (2.54 m)
E. Stowed Length	
600A	26 ft 5 in. (8.05 m)
600AJ	28 ft 11.5 in. (8.83 m)
F. Wheelbase	8 ft (2.44 m)
G. Ground Clearance	8 in. (20 cm)
Weight	
600A	22,150 lb (10,047 kg)
600A Narrow	24,100 lb (10,931 kg)
600AJ	23,050 lb (10,455 kg)
600AJ Narrow	24,200 lb (10,977 kg)
Max. Ground Bearing Pressure	
600A	77 psi (5.5 kg/cm <sup>2</sup> )
600A Narrow	94 psi (6.6 kg/cm <sup>2</sup> )
600AJ	75 psi (5.27 kg/cm <sup>2</sup> )
600AJ Narrow	94 psi (6.6 kg/cm <sup>2</sup> )

**Chassis**

Drive Speed 2WD	4.25 mph (6.8 kph)
Drive Speed 4WD	4.25 mph (6.8 kph)
Gradeability 2WD	30%
Gradeability 4WD	45%
Tires	14 x 17.5 Lug Tread
Narrow Models	14 x 17.5 Air Boss
Axle Oscillation	8 in. (20.4 cm)
Turning Radius (Inside/Outside)	
2WS	11 ft. 5 in. (3.48 m)/17 ft. 8 in. (5.38 m)
4WS	5 ft. 6 in. (1.68 m)/11 ft. 8 in. (3.56 m)
Narrow Models	
4WS	5 ft. 7 in. (1.7 m)/11 ft. 2 in. (3.4 m)

**Power Source**

Dual Fuel Engine	
GM Vortec 3000 MPFI	82 hp (61 kw)
Diesel Engine	
Deutz D2011L04	49 hp (36.5 kw)
Caterpillar 3044C	63.3 hp (47.2 kw)
Fuel Tank Capacity	30 gal. (113.6 L)
Hydraulic Reservoir	30.6 gal. (115.8 L)
Auxiliary Power	12V DC



**The JLG "1 & 5" Warranty**

JLG Industries, Inc. backs our products with our exclusive "1 & 5" Warranty. We provide coverage for one (1) full year, and cover all specified major structural components for five (5) years. These machines meet or exceed applicable OSHA Regulations in 29 CFR 1910.67, 29 CFR 1926.453, ANSI A92.5-2006 and CSA standard B354.4-02 as originally manufactured for intended applications. We reserve the right to make price, specification, and/or equipment changes without prior notification.



**JLG Industries, Inc.**

1 JLG Drive  
McConnellsburg, PA 17233-9533  
Telephone 717-485-5161  
Toll-free in US 877-JLG-LIFT  
Fax 717-485-6417

[www.jlg.com](http://www.jlg.com)

An Oshkosh Corporation Company