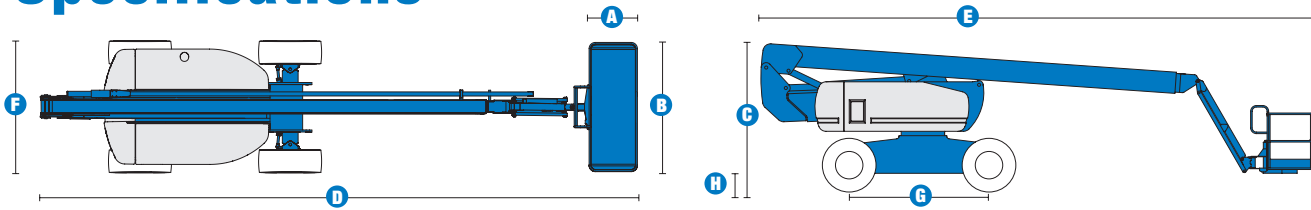


Specifications



MODEL Z™-80/60

MEASUREMENTS	Metric	US
Working height maximum*	25.77 m	84 ft
Platform height maximum	23.77 m	78 ft
Horizontal reach maximum	18.29 m	60 ft
Up-and-over clearance maximum	8.83 m	29 ft
Below ground reach	4.83 m	15 ft 10 in
A Platform length - 6 ft / 8 ft	76 cm / 91 cm	2 ft 6 in / 3 ft
B Platform width - 6 ft / 8 ft	1.83 m / 2.44 m	6 ft / 8 ft
C Height - stowed	3 m	9 ft 10 in
D Length - stowed	11.27 m	37 ft
E Length - transport	11.27 m	37 ft
F Width	2.49 m	8 ft 2 in
G Wheelbase	2.85 m	9 ft 4 in
H Ground clearance - centre	30 cm	12 in

PRODUCTIVITY

Lift capacity	227 kg	500 lbs
Platform rotation	160°	160°
Vertical jib rotation	135°	135°
Turntable rotation	360° continuous	
Turntable tailswing - riser up	1.17 m	3 ft 10 in
Turntable tailswing - riser down	2.24 m	7 ft 4 in
Drive speed - stowed	4.83 km/h	3.0 mph
Drive speed - raised**	1.1 km/h	0.68 mph
Lift speed to full height	76 sec	76 sec
Gradeability - 2WD - stowed***	30%	30%
Gradeability - 4WD - stowed***	50%	50%
Turning radius - 2WS inside	4.42 m	14 ft 6 in
Turning radius - 2WS outside	7.47 m	24 ft 6 in
Turning radius - 4WS inside	2.13 m	7 ft
Turning radius - 4WS outside	4.57 m	15 ft
Controls	12 V DC proportional	
Tyres	18-625 NHS	18-625 NHS

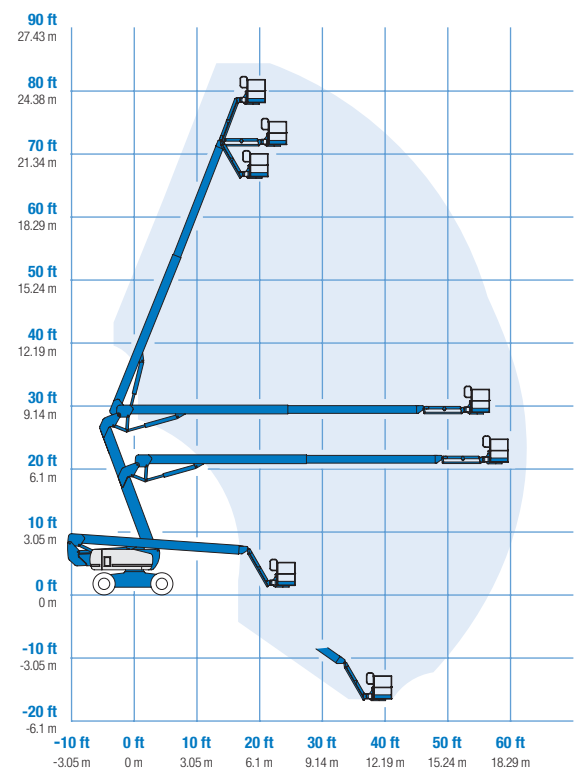
POWER

Power source	Deutz TD 2011 L04i 4 cylinder diesel 78 hp (58 kW) Perkins 804D-33 4 cylinder diesel 63 hp (47 kW) Continental TME27 4 cylinder petrol/LPG 74 hp (55 kW)	
Auxiliary power unit	12 V DC	12 V DC
Hydraulic tank capacity	170.3 L	45 gal
Fuel tank capacity - diesel machines	132.5 L	35 gal
Fuel tank capacity - petrol/LPG machines	114 L	30 gal

WEIGHT****

2WS	16,284 kg	35,900 lbs
4WS	17,010 kg	37,500 lbs
CE max	20,135 kg	44,390 lbs

RANGE OF MOTION Z™-80/60



* The metric equivalent of working height adds 2 m to platform height. U.S. adds 6 ft to platform height.

** In lift mode (platform raised), the machine is designed to operate on firm, level surfaces only.

*** Gradeability applies to driving on slopes. See Operator's Manual for details regarding slope ratings.

**** Weight will vary depending on options and/or country standards.

STANDARDS COMPLIANCE CE EN280, PB-10-611-03

Features

EASILY CONFIGURED TO MEET YOUR NEEDS

PLATFORM OPTIONS

- Steel 2.44 m (8 ft) (standard)
- Steel 1.83 m (6 ft)
- 2.44 m (8 ft) tri-entry

JIB

- 1.83 m (6 ft) jib boom

POWER OPTIONS

- Deutz diesel 78 hp (58 kW)
- Perkins diesel 63 hp (47 kW)
- Continental petrol/LPG 74 hp (55 kW)

DRIVE/STEER OPTIONS

- 2 x 4 (standard)
- 4 x 4
- 2 - wheel steer (standard)
- 4 - wheel steer

AXLE

- Active oscillation

TYRE OPTIONS

- Rough terrain foam-filled (standard)
- Rough terrain non-marking foam-filled

STANDARD FEATURES

MEASUREMENTS

- 25.77 m (84 ft) working height
- 18.28 m (60 ft) horizontal reach
- 8.83 m (29 ft) up-and-over clearance
- Up to 227 kg (500 lb) lift capacity

PRODUCTIVITY

- 1.83 m (6 ft) jib with 135° range
- Self-levelling platform
- Hydraulic platform rotation
- Fully proportional Hall effect controls
- Thumb rocker steer
- On-board diagnostics
- ALC 1000 electronic control system
- Hydraulic oil cooler
- Drive enable
- AC power cord to platform
- Horn
- Hour meter
- Tilt alarm
- Descent alarm
- 360° continuous turntable rotation
- Locking turntable covers
- Full-time positive traction drive
- Two speed wheel motors

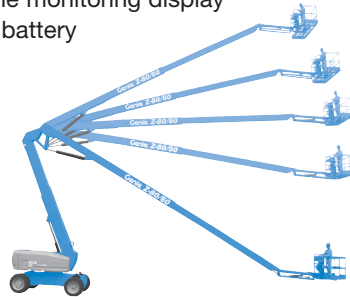
STANDARD FEATURES cont.

PRODUCTIVITY

- Four steering modes: front, rear, crab and coordinated
- Configurable controls to limit lift height to 21.34 m (70 ft)
- Engine status display
- Certified load sensor

POWER

- All engines are emissions compliant
- 12 V DC auxiliary power
- Anti-restart engine protection
- Auto engine fault shutdown
- Block heater (Continental engine)
- Engine monitoring display
- Dual battery



OPTIONS & ACCESSORIES

PRODUCTIVITY

- Platform swing gate
- Half-mesh platform inserts with swing gate
- Platform top auxiliary rail
- Air line to platform
- Fire resistant hydraulic oil
- Biodegradable hydraulic oil
- Basic hostile environment kit
- Deluxe hostile environment kit
- Aircraft protection package
- Tool tray
- Fluorescent tube caddy
- Pipe cradle (pair)
- Alarm package (flashing beacon and travel alarm)
- Platform work lights
- Lockable platform control box covers
- Weld leads to platform

POWER

- AC Generator Packages (110V/60Hz, 3000 W or 220V/50Hz, 2500 W)
- Diesel scrubber muffler with spark arrestor
- Intake air precleaner
- LPG tank only, steel, 15.19 kg (33.5 lb) capacity
- Additional LPG tank with carrier

UK

The Maltings
Wharf Road
Grantham NG31 6BH
UK
Tel: +44 (0)1476 584333
Fax: +44 (0)1476 584334

France

10, ZA de la Croix St. Mathieu
28320 Gallardon
France
Tel: +33 (0)2 37 26 09 99
Fax: +33 (0)2 37 26 09 98

Germany

Finienweg 3
28832 Achim/Bremen
Germany
Tel: +49 (0)4202 8852-0
Fax: +49 (0)4202 8852-25

Spain

Gaià 31, Pol. Ind. Plá d'en Coll
08110 Montcada i Reixac
Barcelona
Spain
Tel: +34 93 572 50 90
Fax: +34 93 572 50 91

Scandinavia

Aröds industriväg 34
422 43 Hisings Backa
Sweden
Tel: +46 31 57 51 00
Fax: +46 31 57 51 04

Middle East

Terex Middle East
PO Box 282325, Dubai
U.A.E.
Tel: +971 4 885 8030
Fax: +971 4 885 6364
Email: awp.infome@terex.com

Genie United States

18340 NE 76th Street
P.O. Box 97030
Redmond, WA
USA 98073-9730
Tel: +1 425 881-1800
Fax: +1 425 883-3475

Email: AWP-InfoEurope@terex.com

Distributed By:



mainline

PLANT • ACCESS • TRAINING • POWER